



FOC TUBA LTD – Laminate Tubes Manufacturer

Introduction

Printing options:

Colors – up to 8 colors

Printing technologies – FLEXOGRAPHY / HP INDIGO DIGITAL

Full 360° printing – YES*

Decoration options:

Cold foil stamping – YES

Hot foil stamping – YES

Varnishing – MATT / GLOSSY / COMBINED

Metallic view – metallic pantones printing / metallized laminate

Laminate options:

ABL – thickness up to 275/20 μm (for tubes diameters 25, 28 and 35 mm)

PBL – thickness up to 300/5 μm (for tubes diameters 35 and 50 mm)

Cap color – any color

Shoulder – any color

Flip-top caps orientation – YES (only for PBL tubes)

Materials:

Laminate manufacturer: AMCOR / HUHTAMAKI

PE / PP granules (for caps and shoulders) manufacturer: LyondellBasell

Top-seal membrane manufacturer: HUHTAMAKI

Tube body length: from 60 to 200 mm



FOC TUBA LTD – Laminate Tubes Manufacturer

Size table

Diameter, mm		25	28	35	50
Laminate type	ABL	•	•	•	
	PBL			•	•
Tube body length, mm	min	60	60	60	60
	max	160	160	195	195
Fill volume, ml	min	20	40	50	100
	max	50	80	135	275

Specifications

Diameter, mm		25	28	35	50
Orifice, mm	2,5 mm	•	•	•	
	4 mm				•
	7,7 mm	•	•	•	
Cap type	Stand-Up glossy	•	•	•	
	Stand-Up matt	•	•	•	
	Flip-Top	•*	•*	•**	•
Peel off membrane		•	•	•	•
Oriented Flip-Top cap				• (PBL only)	•

* Flip-top small caps for toothpaste and other paste-like products

** Flip-top caps for toothpaste and other paste-like products

Or

Flip-top caps for toothpaste and other paste-like products

Or

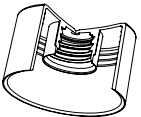
Flip-top 35mm caps for skincare cosmetics and other cream-like products



**FOC TUBA LTD – Laminate Tubes Manufacturer
Caps and Shoulders – Own production**



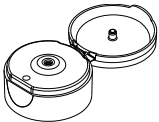
Types of Caps



Stand-up 25 / 28 / 35mm caps for all types of products
(S13 thread, 28mm – glossy surface, 25 / 35mm – matt / glossy surface)



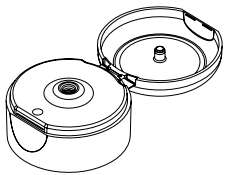
Flip-top caps for toothpaste and other paste-like products
(S13 thread, opening diameter 7,7 mm)



Flip-top 35mm caps for skincare cosmetics and other cream-like products
(S13 thread, opening diameter 3 mm, matt surface)



Flip-top 35mm caps for toothpaste and other paste-like products
(S13 thread, opening diameter 7,7 mm, glossy surface)



Flip-top 50mm caps for skincare cosmetics and other cream-like products
(TR22 thread, opening diameter 4,7 mm, glossy surface)

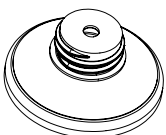
Types of Shoulders



Shoulder for 25 / 28 / 35mm tubes
(S13 thread, opening diameter 2,5 mm, glossy surface)



Shoulder for 25 / 28 / 35mm tubes
(S13 thread, opening diameter 7,7 mm, glossy surface)



Shoulder for 50mm tubes
(TR22 thread, opening diameter 4 mm, glossy surface)



FOC TUBA LTD – Laminate Tubes Manufacturer



Our possibilities

MOQ:

Starting from 5 000 pcs / per design

New design pre-printing preparing period:

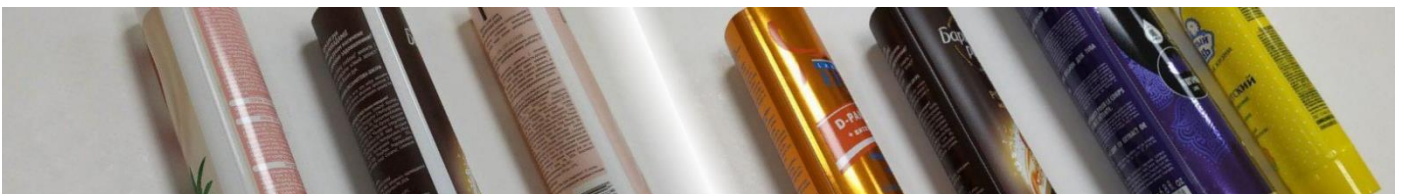
Up to 48 hours

Standard lead time for tube (since the approval of new design, caps production time included):

Up to 14 days

*

Full 360° circular printing means the ability to print across the whole surface of the body of the tube, which allows you to expand the possibilities of decoration.



Classic technology

Full 360° circular printing technology



FOC TUBA LTD – Laminate Tubes Manufacturer

